

SUPPLEMENTARY MATERIALS

TABLE S1. Qualitative evaluation of intraoperative blood loss

	Control group (n = 30)	PECS II group (n = 30)	P-value*
No bleeding, n (%)	0	3 (10)	0.076
Mild, n (%)	30 (100)	27 (90)	
Moderate, n (%)	0	0	
Severe, n (%)	0	0	

* Pearson's χ^2 test.

TABLE S2. Surgical team and patient satisfaction

	Control group (n = 30)	PECS II group (n = 30)	P-value*
Surgical team, n (%)			< 0.001
Dissatisfied	1 (3.3)	0	
Neither dissatisfied nor satisfied	3 (10)	0	
Satisfied	22 (73.3)	6 (20)	
Highly satisfied	4 (13.3)	24 (80)	
Patients, n (%)			< 0.001
Highly dissatisfied	1 (3.3)	0	
Dissatisfied	4 (13.3)	0	
Satisfied	17 (56.7)	4 (13.3)	
Highly satisfied	8 (26.7)	26 (86.7)	

* Pearson's χ^2 test.

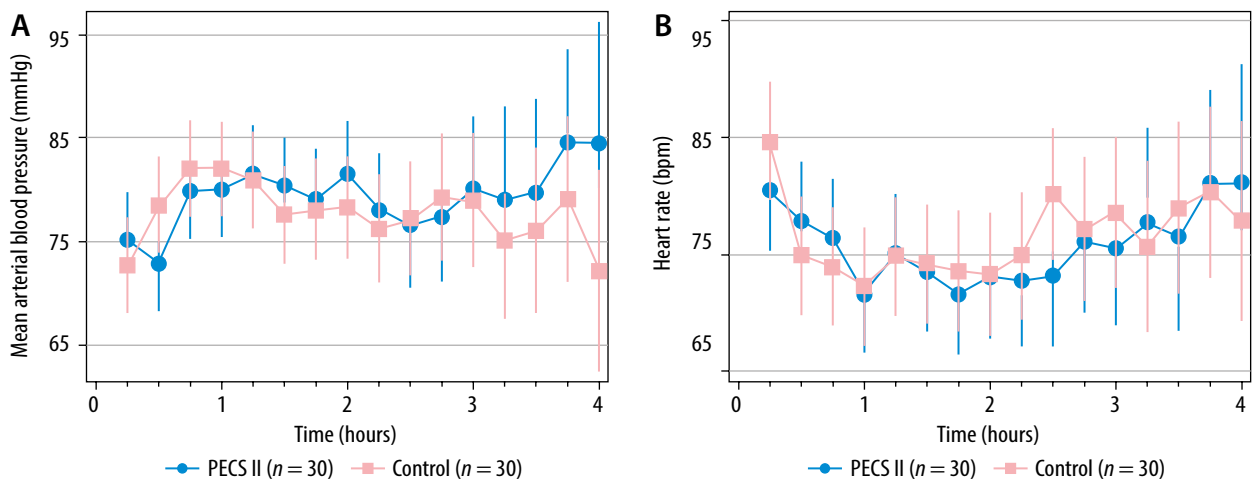


FIGURE S1. Intraoperative hemodynamic outcomes (A) mean arterial pressure (mmHg) and (B) heart rate during the intraoperative period. Results are presented as mean (95% confidence interval). Estimates are from linear mixed-effects models